

As seen in the
December 2009 issue of

 AMERICAN
art COLLECTOR



UPCOMING SHOW

Up to 18 works on show
December 4-18, 2009
Skotia Gallery
150 W. Marcy, Suite 103
Santa Fe, NM 87501
(505) 820-7787

• SHOW LOCATION SANTA FE, NM



RIMI YANG

Waves of inspiration

Rimi Yang's recent paintings are influenced by her trip to Shanghai where her work was exhibited in *ShContemporary: The Asian Pacific Contemporary Art Fair*.

"Shanghai was very intense and that may have carried over into my new works," she says. "But it is difficult for me to point a finger and say conclusively, 'here is the sole motivation of my changes.' I simply paint, and in doing so, allow waves of inspiration, be it past experiences savored or a future imagined but not yet tasted, carry through into my work. Those moments of inspiration are caught and woven into my painting."

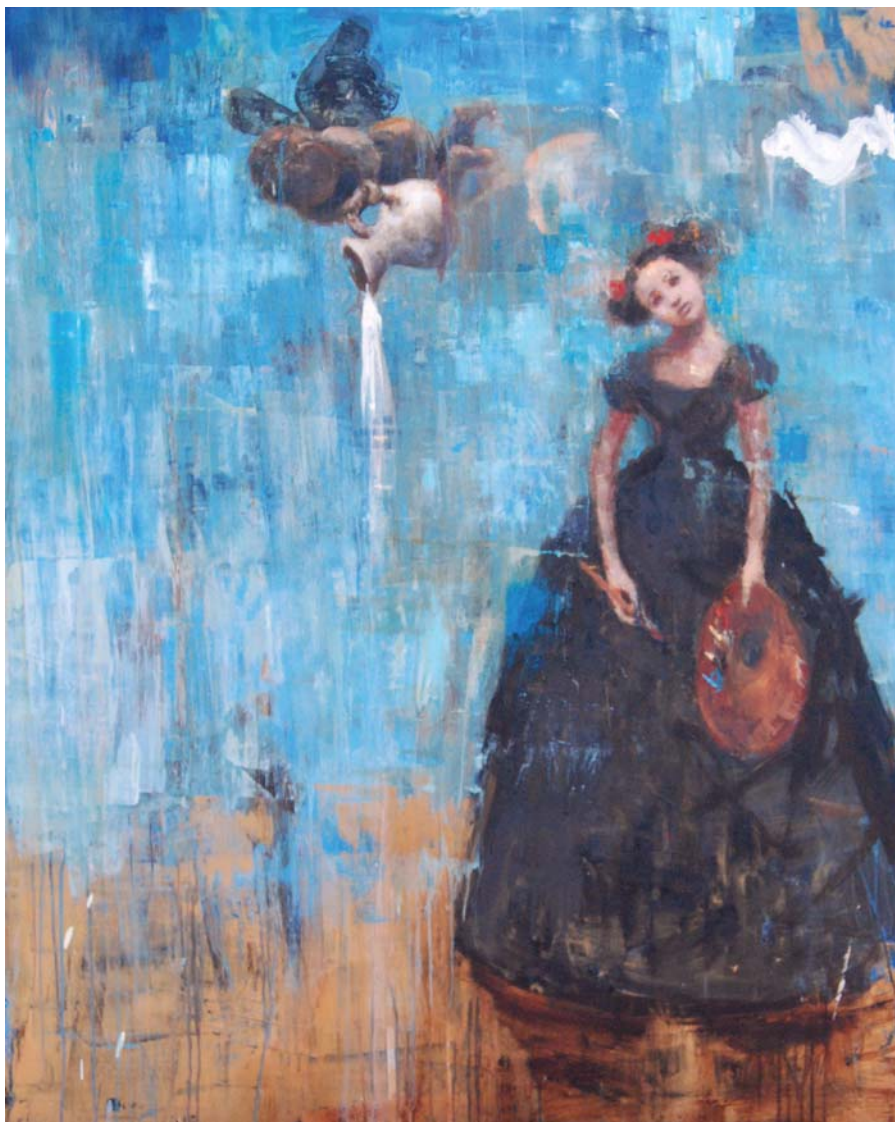
Yang was born and raised in Osaka, Japan, and this was her first trip to China. She now lives in Southern California where she attended California State University, the Los Angeles Academy of Figurative Art, and the Otis College of Art and Design.

True to her own international roots, bridging Eastern and Western culture, her paintings incorporate elements from Japanese prints to 19th-century French portraits. She combines them in fields of abstract color and energetic paint strokes in a way her collectors say is "intensely emotional, unique and sophisticated."

The turning point in her career was the moment she stood before a blank canvas "in my very own, professional studio space for the first time."

"Actually I am still at the same location. I had to let go of my fears and trust that my destiny was that of a full-time artist, that moment of truth when no money was coming in and everything was a bet—'All In' as American poker players like to say," says Yang. "The first day in my studio, looking at the blank canvas, I knew I was doing the right thing for the first time in my life."

Yang's canvases range in size from 60 by 48 inches to 18 by 24 inches, a fact that she attributes to her collectors' desire to



HIDDEN MESSAGE TO MY COLORING LIFE, OIL ON CANVAS, 60 X 48"

see and to acquire works in different sizes and formats.

"I trust collectors enjoy my development and experience a little surprise in the subtle changes in my work," she says. "For me, my painting is not served by using my 'logical mind,' it's too limiting. Instead I prefer trusting my intuition, which emanates

imperceptibly and yet with such power. I trust my art to develop naturally and change effortlessly like the changes of scenery on a boat trip." •

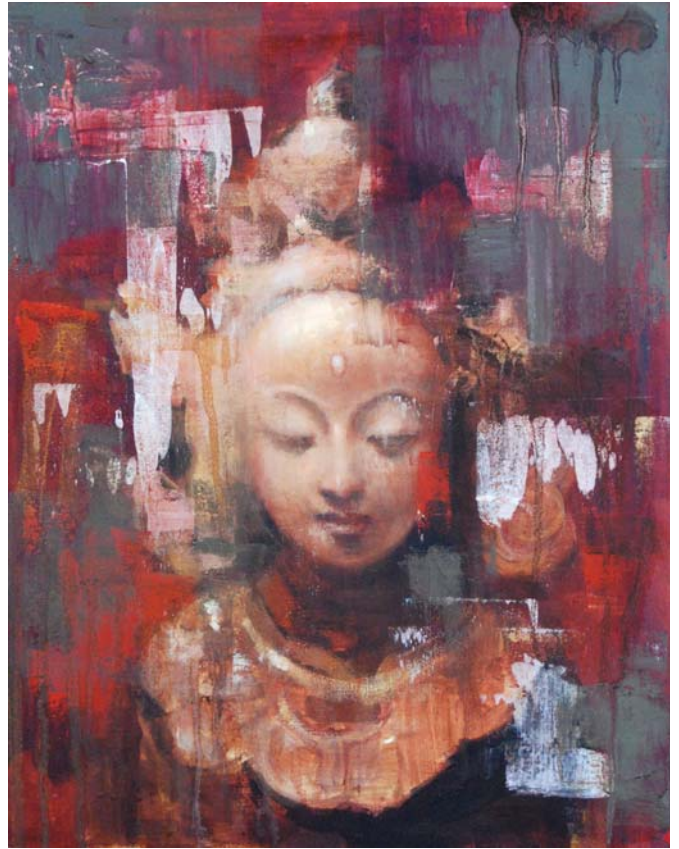
For a direct link to the exhibiting gallery go to

www.americanartcollector.com





WISDOM OF LOVE, OIL ON CANVAS, 20 X 16"



SACRED SPIRIT, OIL ON CANVAS, 18 X 14"



SEARCHING FOR THE WESTERN MOON, OIL ON CANVAS, 48 X 48"

The Collector Says . . .
"When I first saw Rimi's work, I was struck by the mystery and romance of her whimsical world. I now own six pieces and each one reveals Rimi's unique ability to be tender and affecting, while evoking strong emotion that constantly forces me to think and feel more deeply. Art is a huge part of my life and Rimi's work adds a sophisticated sweetness to my collection that is all her own."

— Halle Berry