

characteristic of an aesthetic movement rooted in the great master's "color fields" which have influenced an entire generation of painters, not only in an American context but also on an international level."

He continues:

"The monochrome background of his works seems to hide other meanings. Something always seems to surface from the field: a message, a contact, a shade, an entity - something through which one may glimpse and search for one's innermost feelings, experience, emotional secrets.

The shades appear to be our own; they are projected on the canvas and reflect themselves onto us once more, in a relationship of emotional exchange between the artist, the work, and the observer.

His works always have a hidden meaning, a reading that goes "beyond," something more than what appears at first glance, which inevitably triggers an emotional or passionate reaction."

While agreeing basically with Mr. di Luce, I see much more into Williamson's work. Below you will find two fine examples which are among my favorites. The first dares viewers to use their own imaginations and enter the painting. The light is inviting you in while not providing an easy answer of where you can go "Ah, ha!" I love how the light seeps out into the darkness, blue not black, and gives a gentleness to vivid colors. Far from the darkness being frightening, it is actually a essence of the light. Painting such a fine line where light and dark are friends instead of contrasts takes real talent.

The second boldly interrupts a predictable pattern with a 'crescent' or 180 degree arch on the right hand side of the painting. The interruption refuses to allow everything to fit into a nice, neat pattern and almost defies the definition of a Rothko work. The strong lines in the color fields exists only to be stopped and corralled.

If you are even close to Nashville, go to the Leu Art Gallery and spend a splendid time enjoying this fine artist's work. If not, do yourself a favor and take a minute to go to his site at [www.toddwilliamson.com](http://www.toddwilliamson.com) and treat yourself to a few lovely, peaceful moments.

ShareThis

Posted at 07:50 AM in Art, The

<http://www.davidmixer.com/2009/01/art-the-11-11-11/>



Spe  
Indi



Boo  
Dav  
for  
YOU  
Evel

Wea

Livingst  
Manor, I  
11 °F / -1

Overca  
at 2:08 P  
Advisory!  
Click for For

Spo

Designed & Maintained by RH

Home | About | Contact | Wo  
Share1

< Impressions .....By David  
Mixner | Main | Governor  
Paterson: Time to Appoint Caroline  
Kennedy >>

# Art: Todd Williamson Sweeps into Nashville.

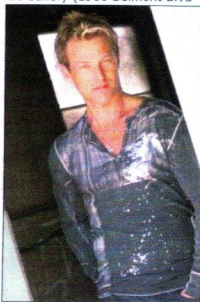
Jan 15

2009

"Y'all" in the Nashville, Tennessee area get your calendars out right quick because powerfully talented artist Todd Williamson is coming to town. Starting with an opening night reception at Leu Art Gallery (1900 Belmont Blvd in Nashville) on January 28, the show will run until April 31 of this year. This will be a major showing for this young creative artist who is on the fast track in the arts community.

In "Art and Living" magazine, Italian critic Trame di Luce wrote this of Williamson's work:

"Todd Williamson has assimilated and elaborated the lesson of Mark Rothko, the great American artist, in an admirable manner: the horizontal line that runs like a red thread through his entire stylistic oeuvre is



Digg

submit

Sign I

New  
Sign  
Up

Ge  
wee  
em  
upda

E-m  
Dav  
Adve

Subsc

Mixne